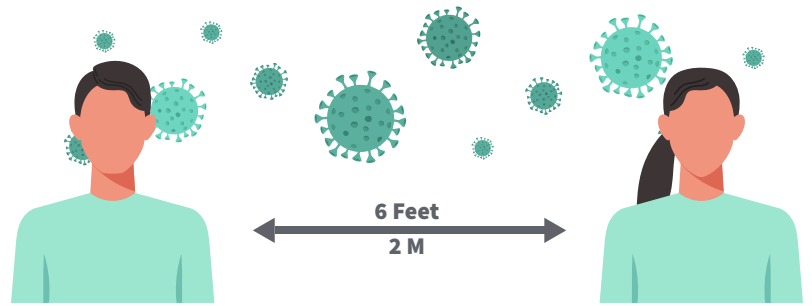
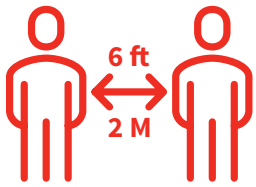


Social Distancing



Together, we can slow the spread of COVID-19 by making a conscious effort to keep a physical distance between each other. Social distancing is proven to be one of the most effective ways to reduce the spread of illness during an outbreak. With patience and cooperation, we can all do our part.



What does Social Distancing mean?

This means making changes in your everyday routines in order to minimize close contact with others, including:

- Avoiding crowded places and non-essential gatherings
- Avoiding common greetings, such as handshakes
- Limiting contact with people at higher risk (e.i. older adults and those in poor health)
- Keeping a distance of at least 6 feet (2 meters) from others, as much as possible



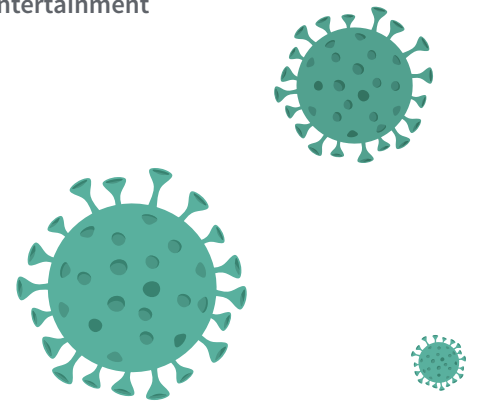
Here's how you can practice social distancing

- Greet with a wave instead of a handshake, a kiss or a hug
- Stay home as much as possible, including for meals and entertainment
- Shop or take public transportation during off-peak hours
- Conduct virtual meetings
- Host virtual play-dates for your kids
- Use technology to keep in touch with friends and family



If possible,

- Use food delivery services or on-line shopping
- Exercise at home or outside
- Work from home



Remember to

- Wash your hands often for at least 20 seconds and avoid touching your face
- Cough or sneeze into the bend of your arm
- Avoid touching surfaces people touch often



If you're concerned you may have COVID-19

- Separate yourself from others as soon as you have symptoms
- If you are outside the home when a symptom develops, go home immediately and avoid taking public transit
- Stay home and follow the advice of your local or regional public health authorities, who may recommend self-isolation
- Call ahead to a health care provider if you are ill and seeking medical attention